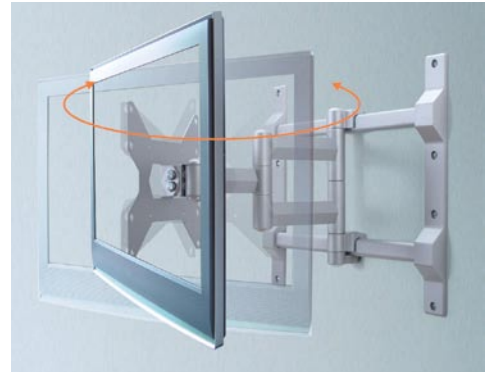
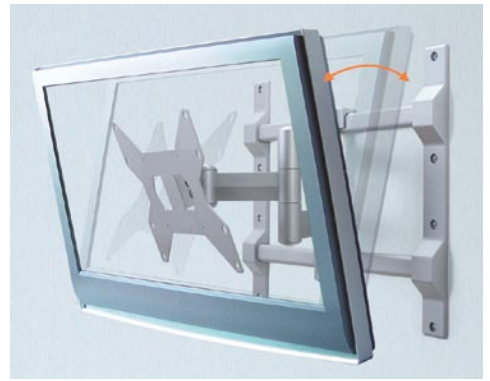
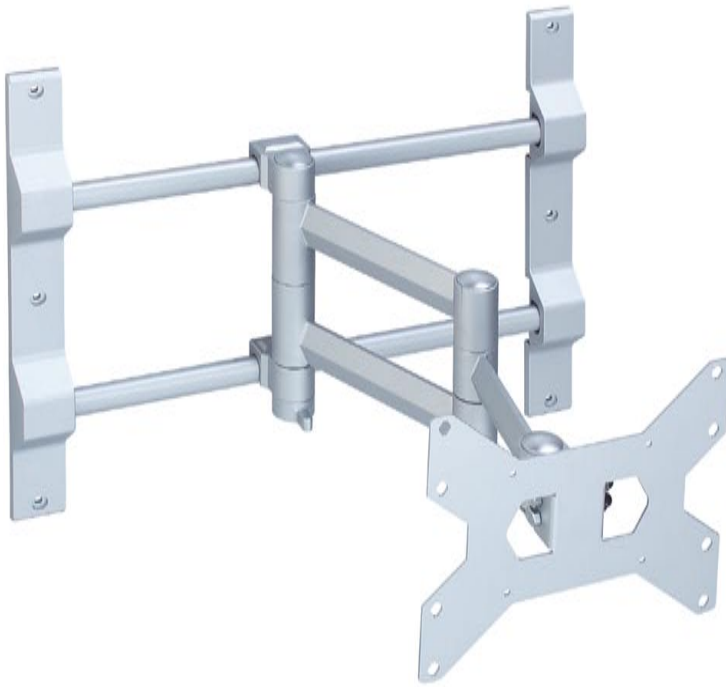




Flat Panel Wall Mounts

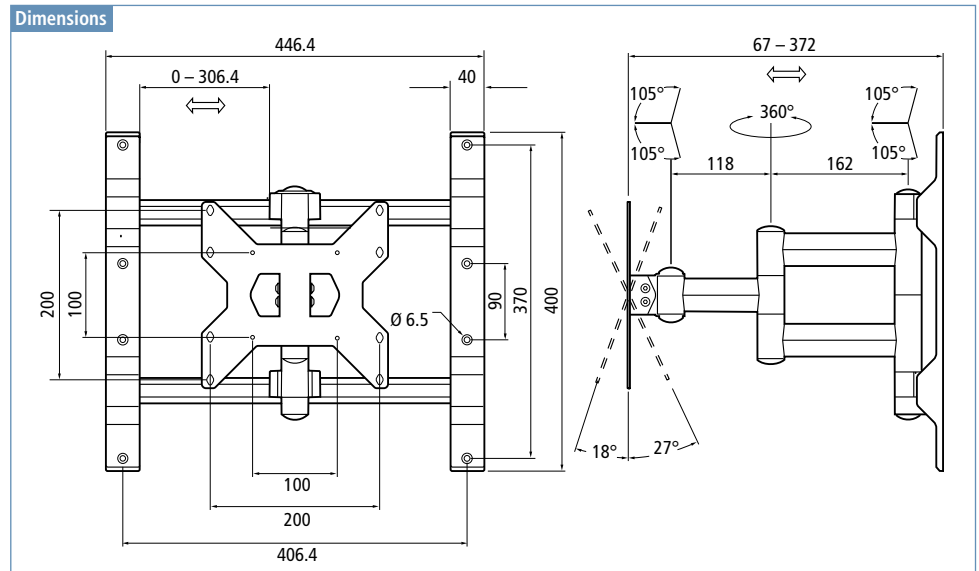


Flat Panel TV Lifts



Features

- ▶ Durable aluminum construction
- ▶ Includes both 100 mm and 200 mm VESA brackets
- ▶ Horizontal adjustment from 8" - 27"
- ▶ Vertical adjustment from 4-7/8" - 17"
- ▶ Extends, tilts and swivels
- ▶ Collapses to less than 3" depth
- ▶ Supports TVs from 20" - 32" up to 110 lbs

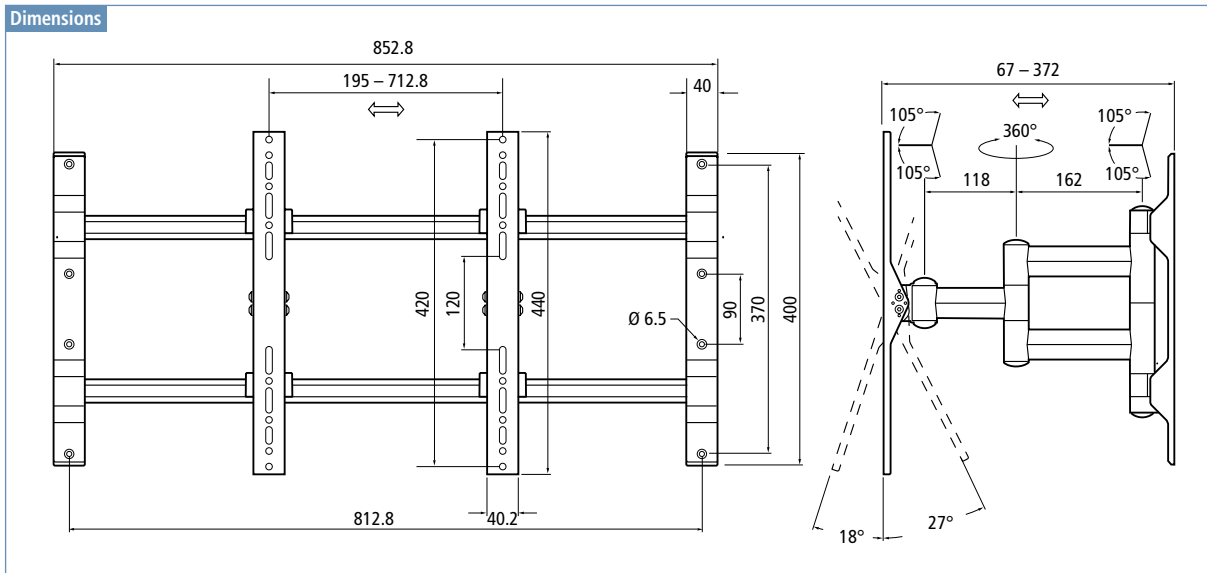




Features

- ▶ Durable aluminum construction
- ▶ Includes both 100 mm and 200 mm VESA brackets
- ▶ Horizontal adjustment from 8" - 27"
- ▶ Vertical adjustment from 4-7/8"-17"
- ▶ Extends, tilts and swivels
- ▶ Collapses to less than 3" depth
- ▶ Supports TVs from 32" - 60" up to 154 lbs

Dimensions

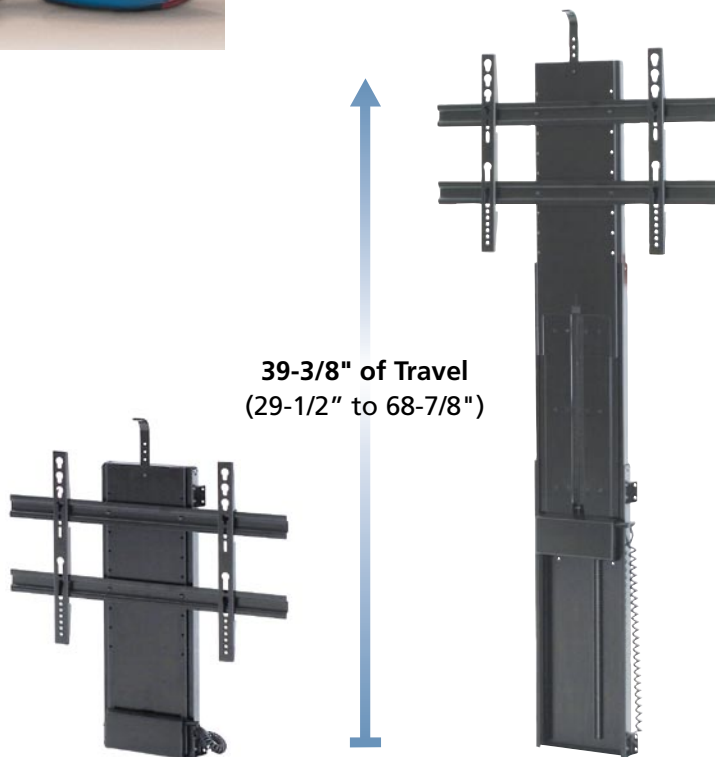




Accommodates TVs 50" – 65"

Features

- ▶▶ Rack and pinion design with unique stability system
- ▶▶ Quiet operation
- ▶▶ Reverse safety function
- ▶▶ Requires only 2-13/16" depth behind the TV
- ▶▶ Requires a build in height of only 29-1/2"
- ▶▶ Weight capacity 225 lbs
- ▶▶ 39-3/8" of travel
- ▶▶ Simple and fast mounting
- ▶▶ IR remote available
- ▶▶ UL listed power supply



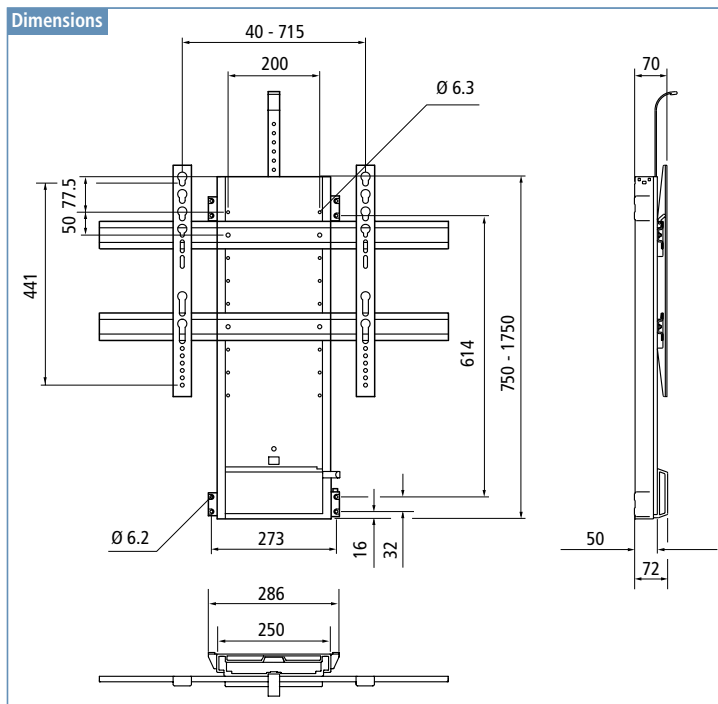
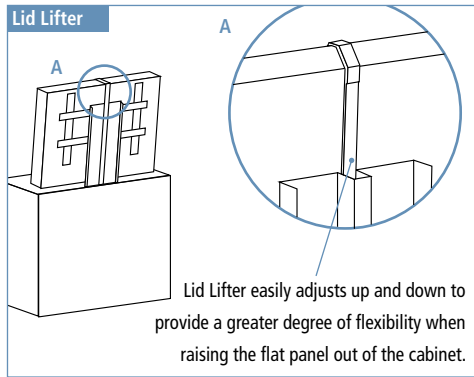
39-3/8" of Travel
(29-1/2" to 68-7/8")



West: toll free (800) 821-4007 · fax (714) 751-2366 · sales@usfutaba.com

Complete inside one carton

- ▶ Remote control (RF)
- ▶ Manual push switch
- ▶ Adjustable lid lifter
- ▶ Plug and play assembly
- ▶ Universal TV mounting bracket





Accommodates TVs 37" – 48"

Features

- ▶▶ Rack and pinion design with unique stability system
- ▶▶ Uses German Bosch® motor for reliable and quiet operation
- ▶▶ Requires only 2-3/4" depth behind the TV
- ▶▶ Weight capacity 200 lbs
- ▶▶ 29-1/2" of travel
- ▶▶ Simple and fast mounting
- ▶▶ UL listed power supply



29-1/2" of Travel
(34-1/16" to 63-1/2")

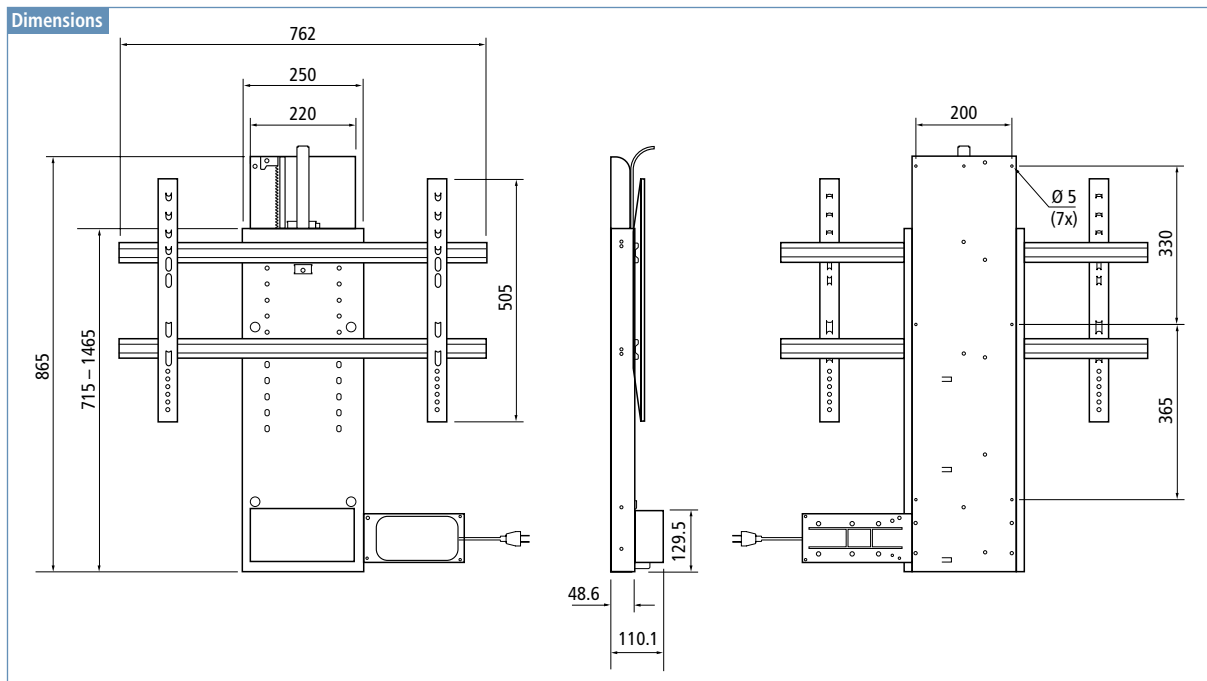
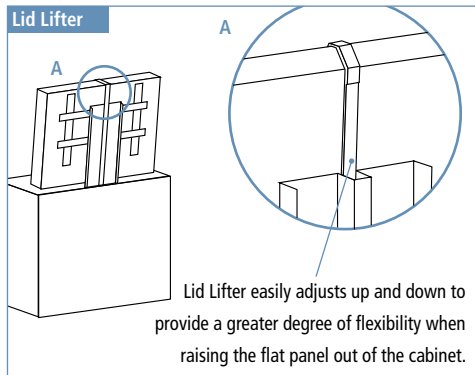


West: toll free (800) 821-4007 · fax (714) 751-2366 · sales@usfutaba.com



Complete inside one carton

- ▶ Remote control (RF)
- ▶ Manual push switch
- ▶ Adjustable lid lifter
- ▶ Plug and play assembly
- ▶ Universal TV mounting bracket

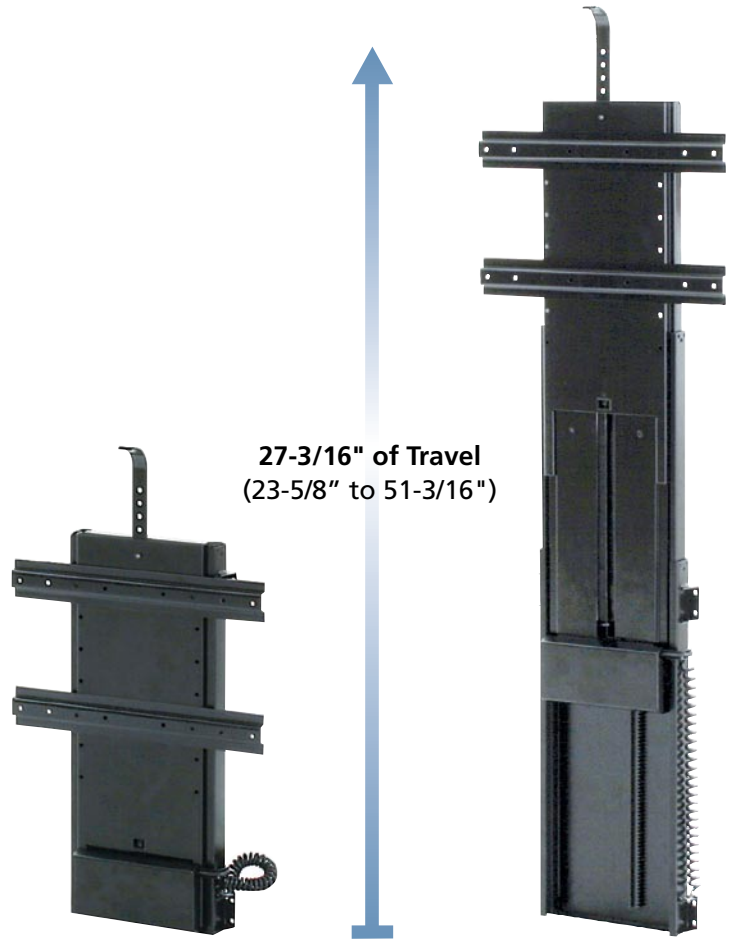




Accommodates TVs 26" – 42"

Features

- ▶▶ Rack and pinion design with unique stability system
- ▶▶ Quite operation
- ▶▶ Reverse safety function
- ▶▶ Requires only 2-13/16" depth behind the TV
- ▶▶ Weight capacity 220 lbs
- ▶▶ 27-3/16" of travel
- ▶▶ Simple and fast mounting
- ▶▶ UL listed power supply

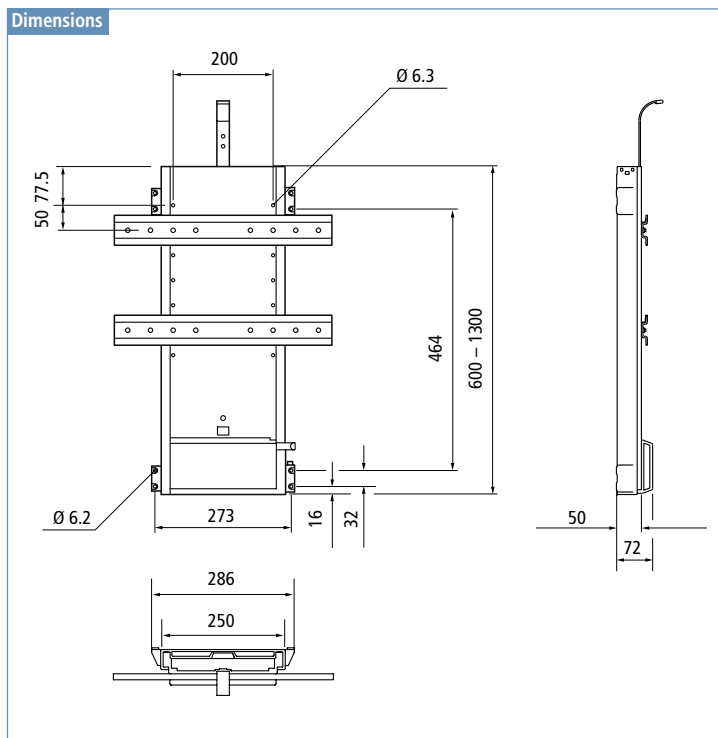
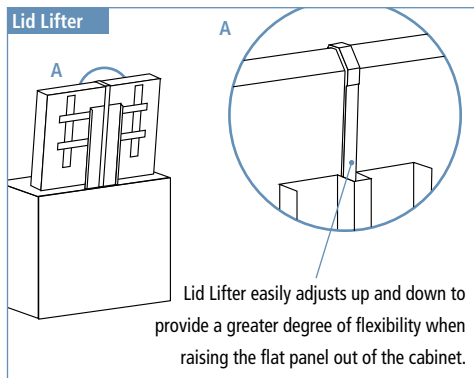


West: toll free (800) 821-4007 · fax (714) 751-2366 · sales@usfutaba.com



Complete inside one carton

- ▶ Remote control (RF)
- ▶ Manual push switch
- ▶ Adjustable lid lifter
- ▶ Plug and play assembly
- ▶ Universal TV mounting bracket





Accommodates TVs 10"– 26"

Features

- ▶ The remote control lift designed for multiple applications
- ▶ Perfect for raising and lowering TVs, desk monitors and cabinet shelves
- ▶ Ideal for limited space applications in boats, RVs, footboards, end tables and flat mounted in base cabinets
- ▶ Weight capacity 110 lbs
- ▶ 18" of travel
- ▶ Accommodates TVs/monitors up to 26"
- ▶ UL listed power supply

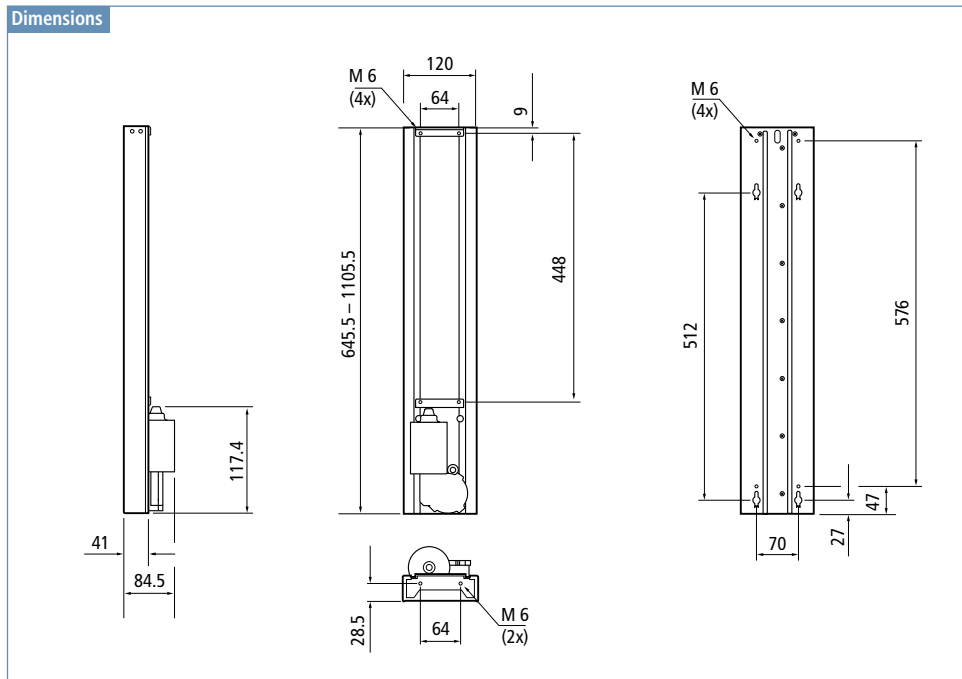


18" of Travel
(25-3/8" - 43-1/2")



Complete inside one carton:

- ▶ Remote control (RF)
- ▶ Manual push switch
- ▶ Plug and play assembly
- ▶ Universal TV mounting bracket



01 **Ball Bearing Slides**

▶▶ Serving America with the world's best since 1983! ◀◀

02 **Drawer Systems**

03 **Hinges**

04 **Locks**

05 **Kitchen Solutions**

06 **Closet Rod and Accessories**

07 **Office Line**

08 **Functional Hardware**

09 **Flat Panel Solutions**

10 **Decorative Hardware**



▶▶ **West**

2901 West Garry Ave.
Santa Ana, CA 92704
Phone (800) 821-4007
Fax (714) 751-2366

East ◀◀

525 Byron Street
Chesapeake, VA 23320
Phone (877) 293-0584
Fax (757) 549-9794