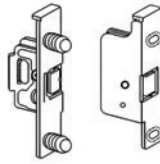


**Front Mounting Bracket Slide on**

Item Number	Left	Right	Description	Packaging
17139 04	023	024	Screw on	250 pcs
17139 04	020	021	Press dowel	250 pcs

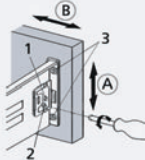
Press dowel size = 10.5 mm



**Adjustment**

**A. Height adjustment:**  
Loosen screw 1 slightly.  
Adjust accentric screw 2.  
Adjustment range ± 1.8 mm.  
Retighten screw 1.

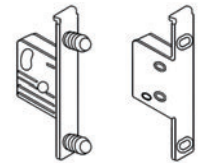
**B. Side adjustment:**  
Loosen screw 2 slightly.  
Move front into required position.  
Adjustment range ± 1.5 mm.  
Retighten screw 3.



**Front Mounting Bracket Clip on**

Item Number	Left	Right	Description	Packaging
17139 04	038	039	Screw on	250 pcs
17139 04	036	037	Press dowel	250 pcs

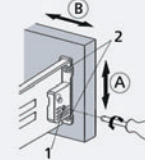
Press dowel size = 10.5 mm



**Adjustment**

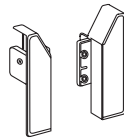
**A. Height adjustment:**  
Adjust accentric screw 1.  
Adjustment range ± 1.8 mm.

**B. Side adjustment:**  
Loosen screw 2 slightly.  
Move front into required position.  
Adjustment range ± 1.5 mm.



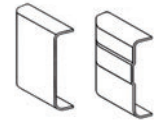
**Internal Roll Out Shelf Brackets (L/R)**

Item Number	Drawer Length		Packaging
	Inches	mm	
17139 29 022	3-3/8	85	250 pcs
17139 29 027	4-5/8	117	250 pcs



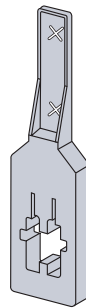
**Cover Caps (L/R)**

Item Number	Description	Packaging
17339 29 005	For Slide on Brackets	250 pcs



**Railing Marking Template**

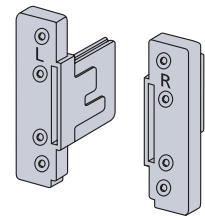
- ▶▶ For marking single and double railing
- ▶▶ Packaged individually



Item Number	Description
91999 00 076	Railing Marking Template

**Drawer Front Marking Jig**

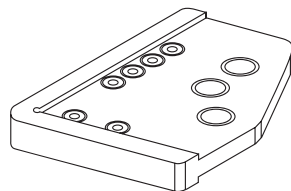
- ▶▶ Left and right
- ▶▶ 6 marking pins included
- ▶▶ Packaged individually



Item Number	Description
91999 00 075*	Drawer Front Marking Jig

**Drilling Template**

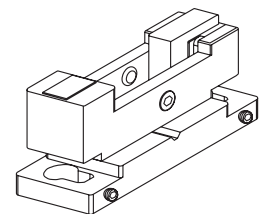
- ▶▶ For drilling or marking bottom panel and back panel
- ▶▶ Packaged individually



Item Number	Description
91939 00 077	Drilling Template

**Insertion Ram**

- ▶▶ For insertion of press-in front fixing brackets
- ▶▶ Packaged individually



Item Number	Description
91999 00 079	Hand Insertion
91999 00 080	Machine Insertion

\* – Special Order only – call for current pricing, minimum order quantities and lead-time.