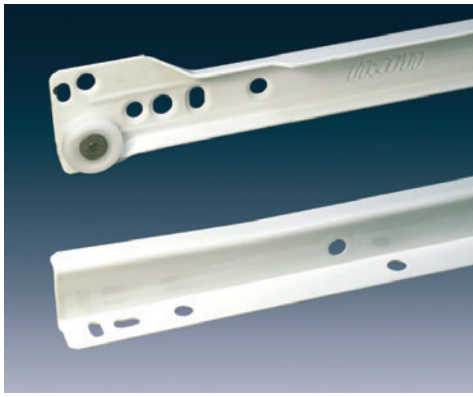


Single Extension Premium Euro Slide



Item Number	Drawer Length		Min. Internal Cabinet Depth		Loss of Extension	
	Inches	mm	Inches	mm	Inches	mm
14923 82 000	9-13/16	250	9-15/16	253	3-3/8	85
14923 82 001	11-13/16	300	11-7/8	303	3-3/8	85
14923 82 002	13-3/4	350	13-7/8	353	3-3/8	85
14923 82 003	15-3/4	400	15-7/8	403	3-3/8	85
14923 82 004	17-3/4	450	17-13/16	453	3-3/4	95
14923 82 005	19-11/16	500	19-13/16	503	4	102
14923 82 006	21-5/8	550	21-3/4	553	4-5/16	110
14923 82 007	23-5/8	600	23-3/4	603	4-3/4	120
14923 82 008	25-5/8	650	25-3/4	653	4-3/4	120
14923 82 009	27-1/2	700	27-5/8	703	5-3/8	135

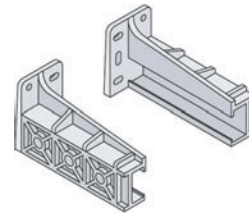
Features

- » Self-closing
- » Load rating: 100 lbs. (22" length)
- » White epoxy coated finish
- » Double out-stop safety design
- » Locked-in position when extended
- » Thickness: 1.2 mm
- » 32 mm mounting system
- » Lengths: 10" – 28"
- » Packaging: 25 sets cutlery packed
- » Special order colors available (cream, black or brown)

Find hole spacing online:



catalog.usfutaba.com/drawerdimensions/#4



Item Number	Description
17119 29 035	Face Frame Rear Mounting Brackets (Pair)

Single Extension Economy Euro Slide



Applications

- » Kitchen cabinets
- » Bedroom furniture
- » Commerical furniture

Features

- » Self-closing
- » White epoxy coated finish
- » 1.2mm thickness
- » Double out-stop safety design
- » Locked-in position when extended
- » 32 mm mounting system
- » Lengths 10" – 24"
- » Load rating: 55 lbs.
- » Special order colors available (cream, black or brown)

Item Number	Item Number	Drawer Length		Min. Internal Cabinet Depth		Loss of Extension	
		Inches	mm	Inches	mm	Inches	mm
15921 82 001	15921 82 100	9-7/8	250	9-15/16	253	3-3/8	85
15921 82 002	15921 82 101	11-13/16	300	11-7/8	303	3-3/8	85
15921 82 003	15921 82 102	13-3/4	350	13-7/8	353	3-3/8	85
15921 82 004	15921 82 103	15-3/4	400	15-7/8	403	3-3/8	85
15921 82 005	15921 82 104	17-3/4	450	17-13/16	453	3-3/4	95
15921 82 006	15921 82 105	19-11/16	500	19-13/16	503	4	102
15921 82 007	15921 82 106	21-5/8	550	21-3/4	553	4-5/16	109
15921 82 008	15921 82 107	23-5/8	600	23-3/4	603	4-3/4	119

20 sets, taped in pairs

100 components each of cabinet members (L/R) and drawer members (L/R)

Find hole spacing online:



catalog.usfutaba.com/drawerdimensions/#5



Item Number	Description
17119 29 040	Face Frame Rear Mounting Brackets (Pair)