



Features

- ▶ Swivel
- ▶ Rubber wheel – black
- ▶ Mounting plate
- ▶ Available with or without brake

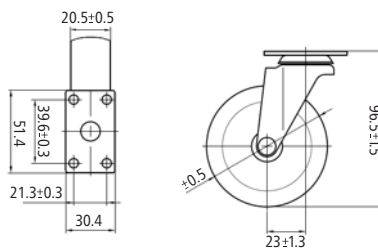
Capacity per castor

- ▶ 3" (76mm) 80 lbs.
- ▶ 4" (100mm) 110 lbs.
- ▶ 5" (126mm) 110 lbs.

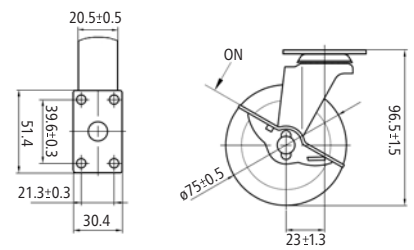
Item Number	Wheel Ø Dia.		Type	Brake
	Inches	mm		
75123 12 004	3	76	Plate	No
75123 12 006	4	101	Plate	No
75123 12 007	5	126	Plate	No
75121 12 000	3	76	Plate	Yes
75121 12 001	4	101	Plate	Yes
75121 12 002	5	126	Plate	Yes

Please call for other options, features and configurations.

75123 12 004 Dimensions



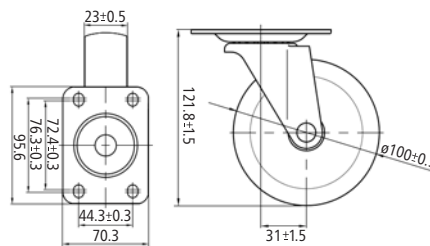
75121 12 000 Dimensions



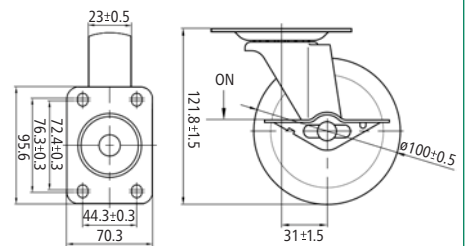
Also available by special order
(minimum quantities may apply):

- ▶ Stem mount

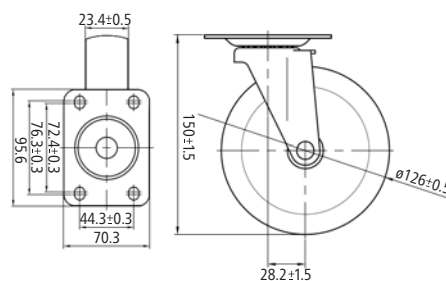
75123 12 006 Dimensions



75121 12 001 Dimensions



75123 12 007 Dimensions



75121 12 002 Dimensions

