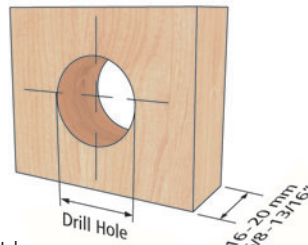


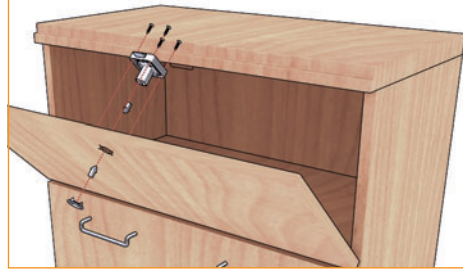
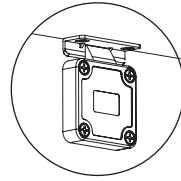
### Features

- ▶ Automatically locks drawer when closed
- ▶ Anti-pick bracket ensures maximum security
- ▶ Click action mechanism
- ▶ Dim. D = 25mm for screw mounting
- ▶ 3/4" (19mm) diameter hole
- ▶ 7/8" (22mm) barrel length
- ▶ Zinc alloy die cast
- ▶ Core with keys sold separately (refer to page 76)
- ▶ Box Quantity = 25

### Drill Hole and application



Drill Hole:  
 Ø 19 mm for 18 mm Housing-Dia. Ø  
 Ø 17.5 mm for 16.5 mm Housing-Dia. Ø



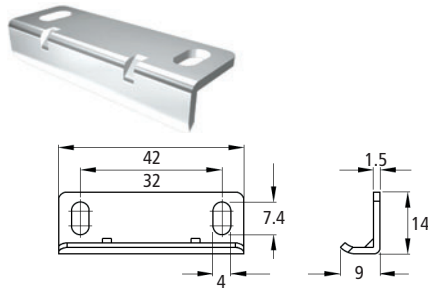
### Set includes

- 1 Lock housing
- 1 Strike plate (L-Type)
- 1 Bezel

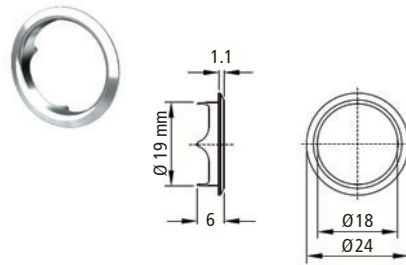
### Item Number Finish

Special Order*	Black
Special Order*	Brass
30231 52 015	Nickel

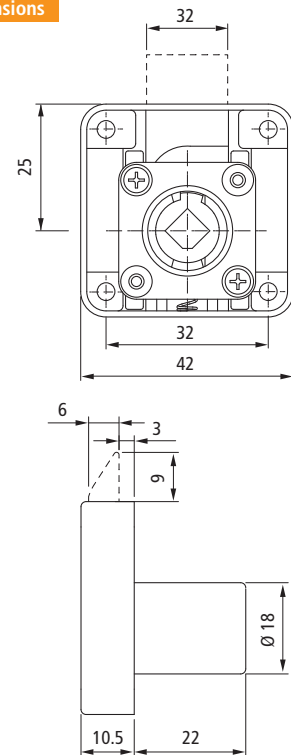
### L-Type Strike Plate



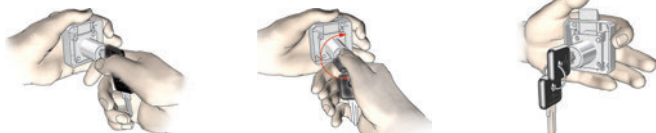
### Bezel



### Dimensions

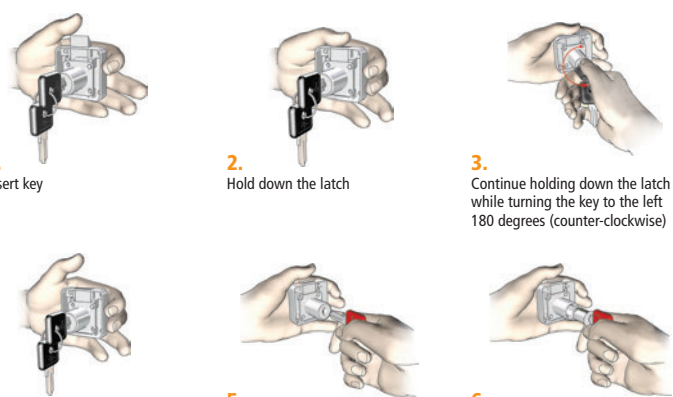


### Preparing for installation



- 1.** Hold down the latch, insert the cylinder (with key inserted) into housing. Be sure to align the two diamond shaped objects on both the cylinder core and the cylinder housing.
- 2.** Continue to hold down the latch while turning the key 180 degrees to the right (clockwise)
- 3.** Release the latch, and the lock is now ready to use

### Removal of cylinder



- 1.** Insert key
- 2.** Hold down the latch
- 3.** Continue holding down the latch while turning the key to the left 180 degrees (counter-clockwise)
- 4.** The latch is now in the down position, pull key straight out
- 5.** Cylinder is ready to be removed by a removal key (Red Key, sold separately), insert removal key and pull out cylinder
- 6.** Cylinder is removed

\* – Special Order only – call for current pricing, minimum order quantities and lead-time.