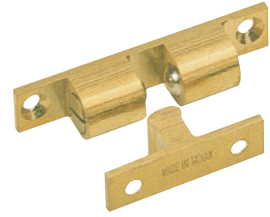
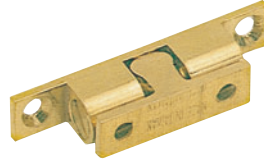
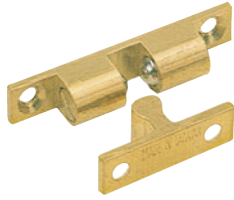
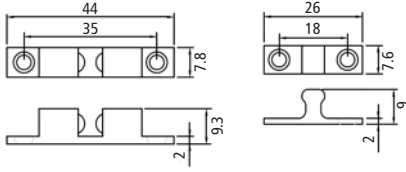


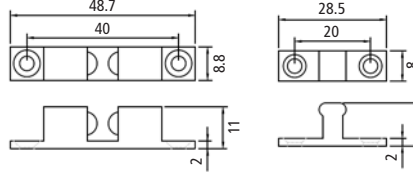
Double Bead Catches



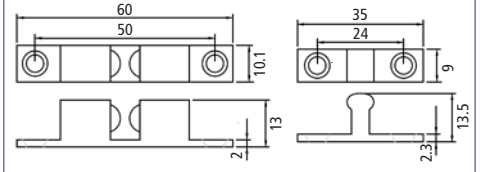
Dimensions



Dimensions



Dimensions



Item Number	Dimensions		Finish
	Inch	mm	
73512 55 082	1-11/16 x 5/16	43 x 8	Solid Brass

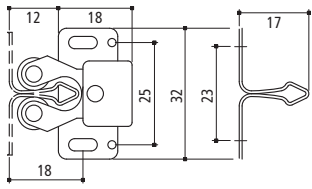
Item Number	Dimensions		Finish
	Inch	mm	
73512 55 083	1-15/16 x 3/8	49 x 9	Solid Brass

Item Number	Dimensions		Finish
	Inches	mm	
73512 55 084	2-3/8 x 7/16	59 x 11	Solid Brass

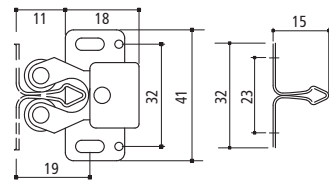
Double Roller Catches



Dimensions



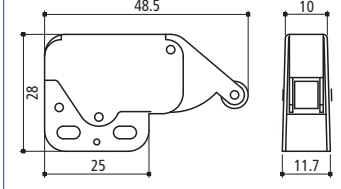
Dimensions



Mini Latch



Dimensions



with strike

32 mm with plate and screw			
Item Number	Hole Distance c.c.		Finish
	Inch	mm	
73112 42 011	1	25	Antique Copper
73112 04 009	1	25	Zinc

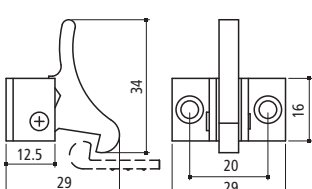
32 mm high rise - bulk			
Item Number	Hole Distance c.c.		Finish
	Inch	mm	
73112 45 012	1-1/4	32	Bronze Plated
73112 04 013	1-1/4	32	Zinc

Item Number	Dimensions		Finish
	Inch	mm	
73512 55 070	1-7/8 x 1-1/16	48.5 x 28	Brass/Brown Strike
73512 52 018	1-7/8 x 1-1/16	48.5 x 28	Nickel/Brown Strike
73512 52 071	1-7/8 x 1-1/16	48.5 x 28	Nickel/White Strike

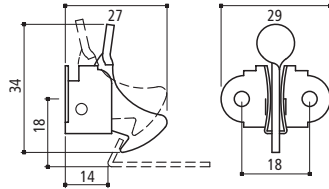
Elbow Catches



Dimensions



Dimensions

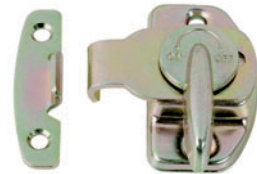


with strike, nail and screw

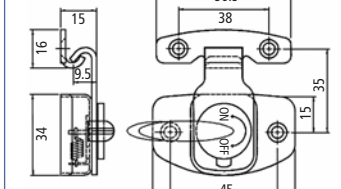
Solid brass with strike			
Item Number	Hole Distance c.c.		Finish
	Inch	mm	
73112 46 017	3/4	19	Chrome Plated

Item Number	Hole Distance c.c.		Finish
	Inch	mm	
73112 55 015	5/8	16	Brass
73112 04 016	5/8	16	Zinc

Cam Type Sash Lock



Dimensions



with spring action

Item Number	Hole Distance c.c.		Finish
	Inch	mm	
74197 05 017	1-9/16 & 1-3/4	45 & 39.5	Yellow Zinc