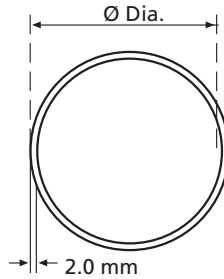


## Steel Heavy-Duty Round Closet Rods



### Dimensions



### Features

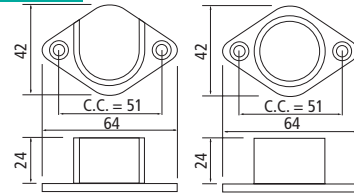
- ▶▶ Seamless
- ▶▶ Material Thickness: 0.079" · 2 mm · 14-gauge

Item Number	Finish	Length		Ø Diameter	
		Feet	m	Inch	mm
53431 46 017	Chrome	4	1.22	1-1/16	27
53431 46 030	Chrome	5	1.53	1-1/16	27
53431 46 031	Chrome	6	1.83	1-1/16	27
53431 46 008	Chrome	8	2.44	1-1/16	27
53431 46 032	Chrome	10	3	1-1/16	27
53431 46 006	Chrome	12	3.66	1-1/16	27
53431 46 033	Chrome	4	1.22	1-5/16	34
53431 46 034	Chrome	5	1.53	1-5/16	34
53431 46 035	Chrome	6	1.83	1-5/16	34
53431 46 015	Chrome	8	2.44	1-5/16	34
53431 46 036	Chrome	10	3	1-5/16	34
53431 46 014	Chrome	12	3.66	1-5/16	34

## Supports for Steel Heavy-Duty Round Closet Rods



### Dimensions

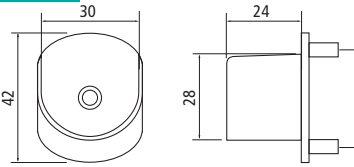


1-1/16" · Screws are included

Item Number	Finish	for Rod Ø	Type	Mount
54133 46 019	Chrome	1-1/16 27	open	screw
54233 46 028	Chrome	1-1/16 27	closed	screw



### Dimensions

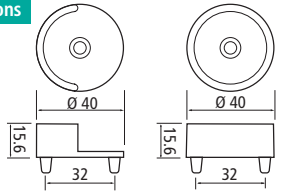


1-1/16" · Screws are included

Item Number	Finish	for Rod Ø	Type	Mount
54133 46 098	Chrome	1-1/16 27	open	5 mm pin



### Dimensions

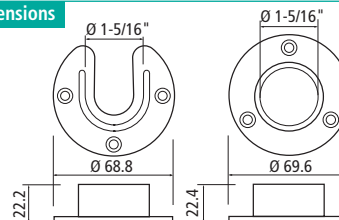


1-5/16" · Screws are included

Item Number	Finish	for Rod Ø	Type	Mount
54131 46 094	Chrome	1-5/16 34	open	5 mm pin
54231 46 089	Chrome	1-5/16 34	closed	5 mm pin



### Dimensions



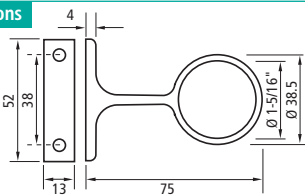
1-5/16" · Screws are included

Item Number	Finish	for Rod Ø	Type	Mount
54133 46 021	Chrome	1-5/16 34	open	screw
54233 46 027	Chrome	1-5/16 34	closed	screw

## Center Supports for Steel Heavy-Duty Round Closet Rods



### Dimensions



Screw Mount · Screws are included

Item Number	Finish	for Rod Ø	Type	Mount
54233 46 106	Chrome	1-1/16 27	closed	screw
54233 46 105	Chrome	1-5/16 34	closed	screw